



**LR : INFRASTRUCTURE**

INTEGRATED INFRASTRUCTURE SOLUTIONS.



# LR Infrastructure

in the business of infrastructure development

Established in

1997



- Construction
- Turnkey Interiors
- Project Management

300+

employees

6

Locations

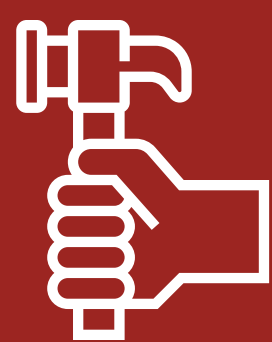
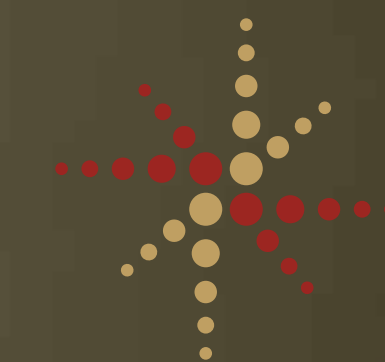
- Andhra
- Karnataka
- Kerala
- Pondicherry
- Telangana
- Tamilnadu

- Designing
- Space Management
- Facility Management



1500+

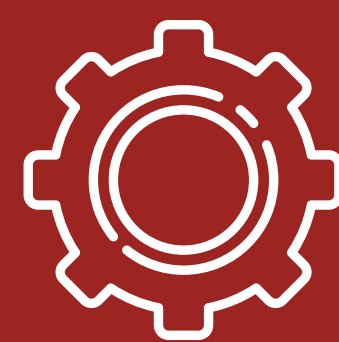
Completed projects



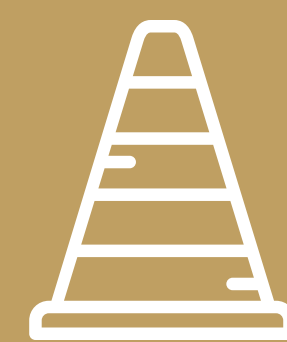
Offerings



Portfolio



Execution



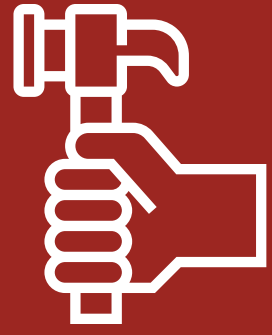
Compliance



Quality



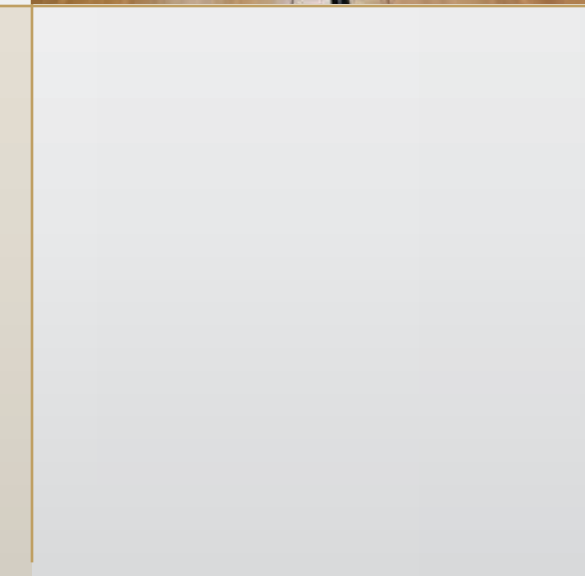
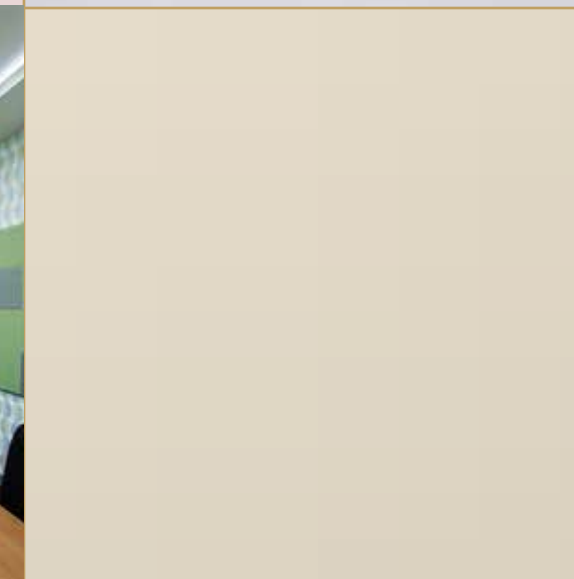
Why Us



# Our Offerings

What we do best

- Design Services
- Project Management
- Civil Works
- Interior & Furnishing
- Electrical Works
- HVAC - Air conditioning
- LAN Networking
- Safety & Security





# Our Portfolio

A few of our long list of customers include



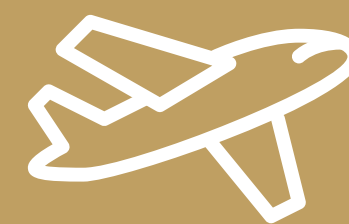
**BANKING**



**INSURANCE**



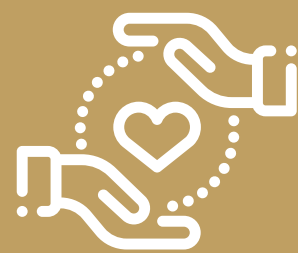
**FINANCE**



**TRAVEL**



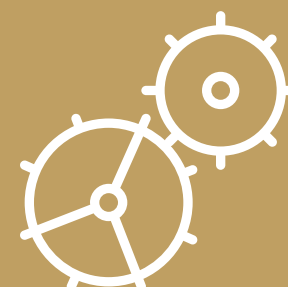
**RETAIL**



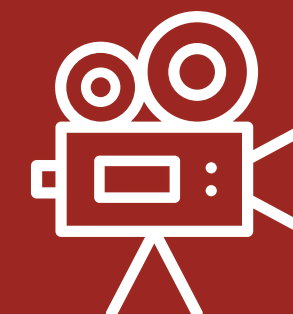
**HEALTH CARE**



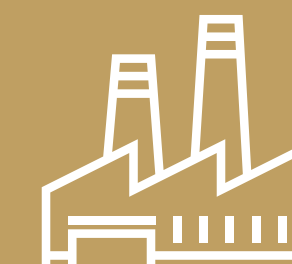
**IT & ITES**



**ENGINEERING**



**MEDIA**



**INDUSTRIES**



**TRANSPORT**



**HOSPITALITY**



**EDUCATION**

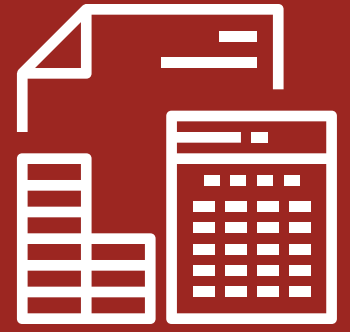


**TELECOM**



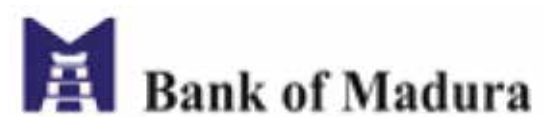
**RESIDENTIAL**





# Banking Sector

A few of our completed assignments











# Insurance Sector

A few of our completed assignments











# Financial Sector

A few of our completed assignments



**RELIANCE**  
Capital

**ICICI direct**  
Centre for Financial Learning

**ADITYA BIRLA**  
  
MONEY

Our Mission... Your Growth  
**CAMS**

**Tally**  
POWER OF SIMPLICITY

**SREI**

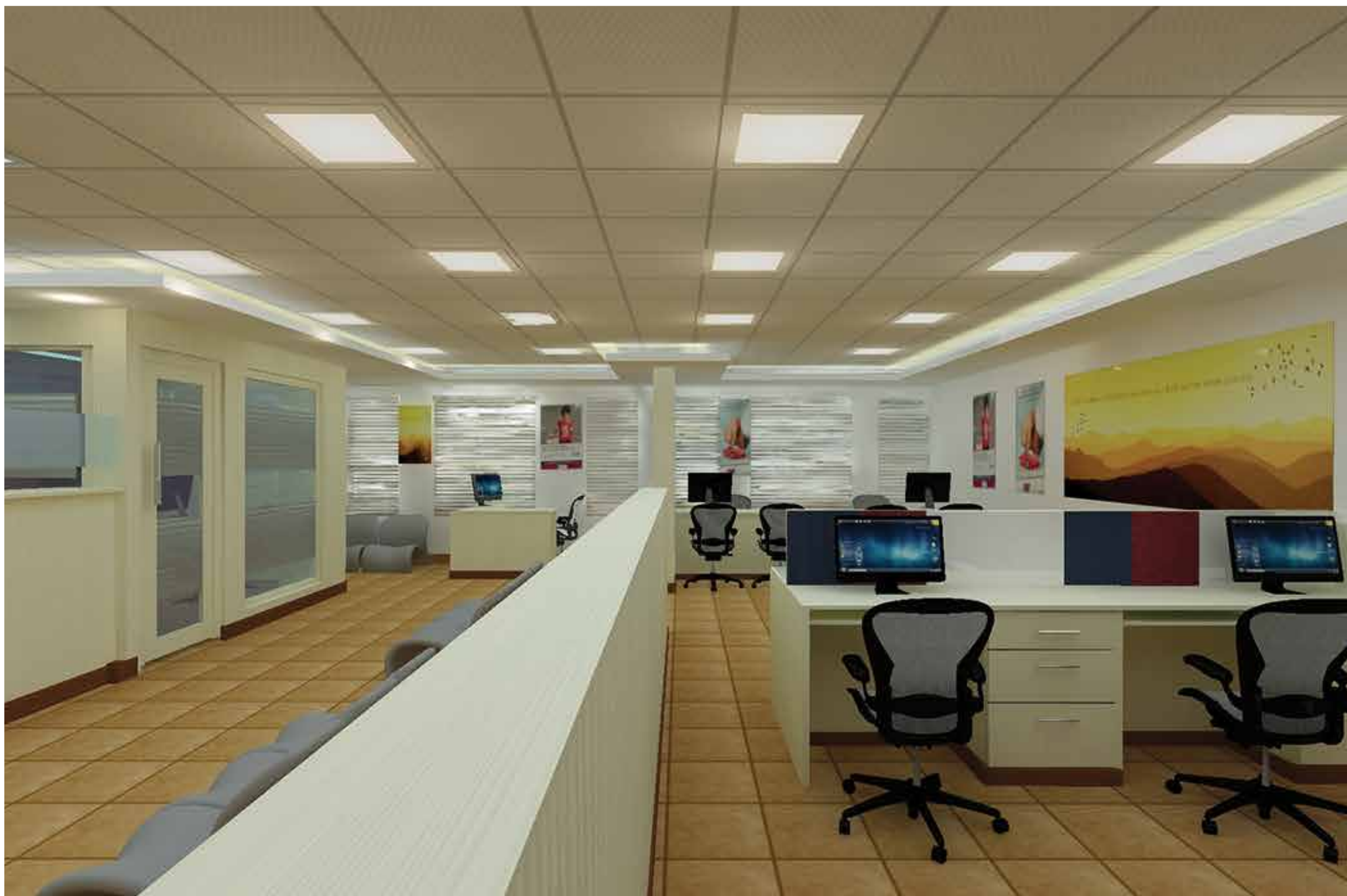
**Financial**  
Technologies

**BRICS**  
the wealth of experience

**W** **wealthadvisors**

 **CAPSTONE**  
FINANCIAL









# Travels Sector

A few of our completed assignments











# Retail Sector

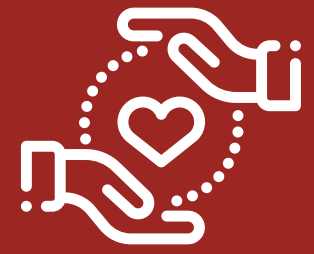
A few of our completed assignments











# Health Care Sector

A few of our completed assignments



Sakthi Dental









# IT & ITES - Sector

A few of our completed assignments











# Engineering Sector

A few of our completed assignments



Sundram Fasteners Limited









# Media & Entertainment Sector

A few of our completed assignments

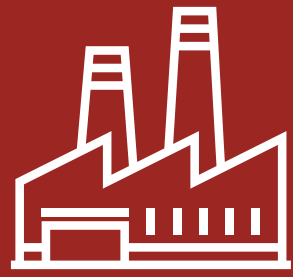




THIRUPPA CHINAI







# Industrial Sector

A few of our completed assignments











# Transport & Logistics Sector

A few of our completed assignments

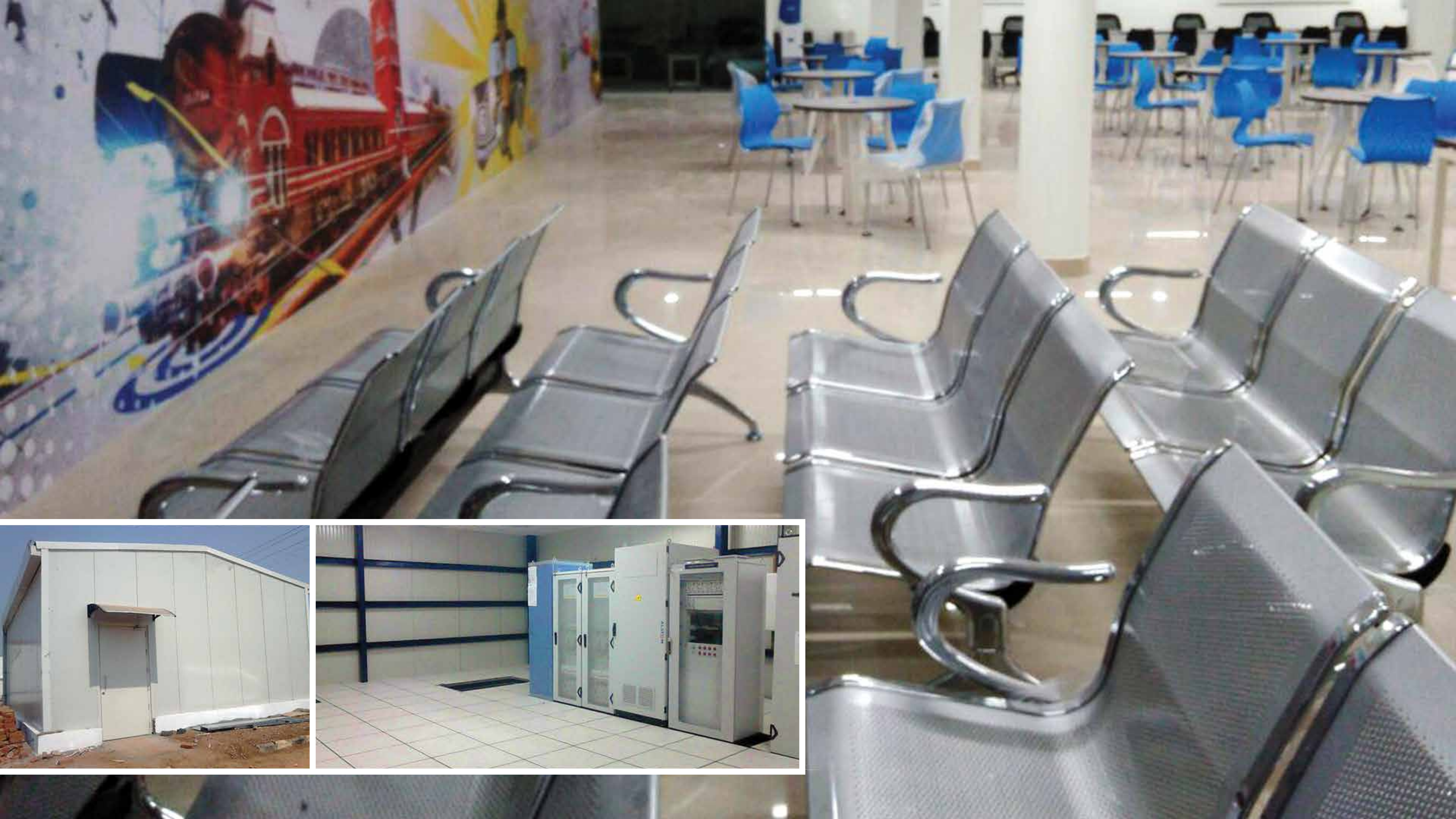


**ALSTOM**



 **APM TERMINALS**  
Lifting Global Trade.



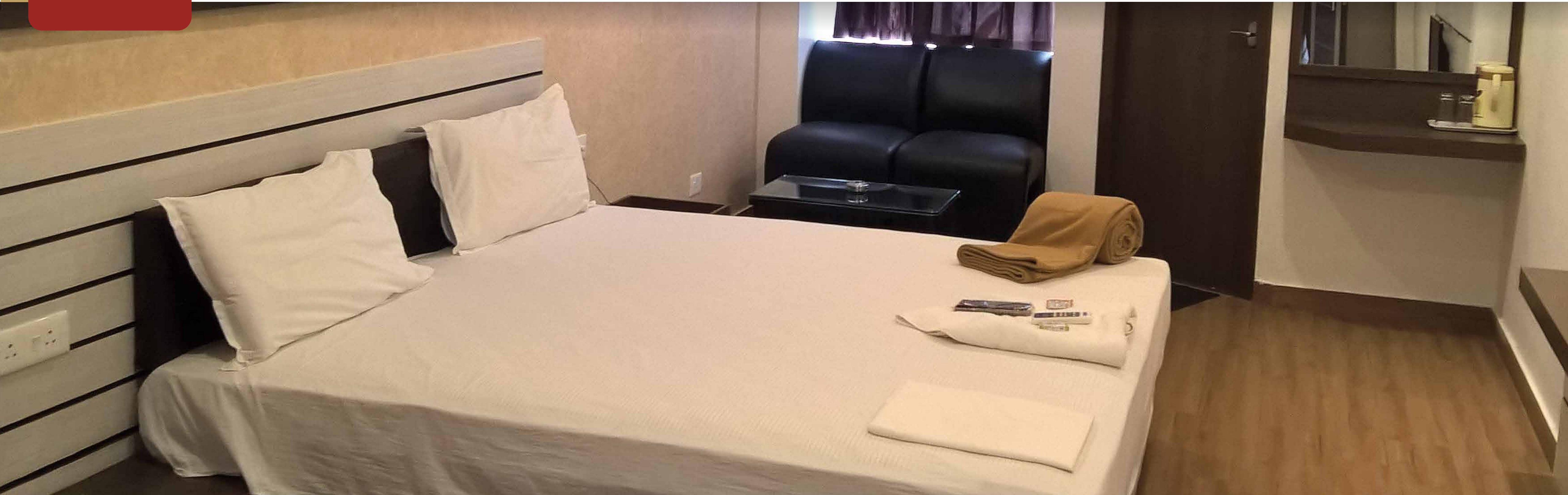






# Hospitality Sector

A few of our completed assignments



**Aarthi Hotel**



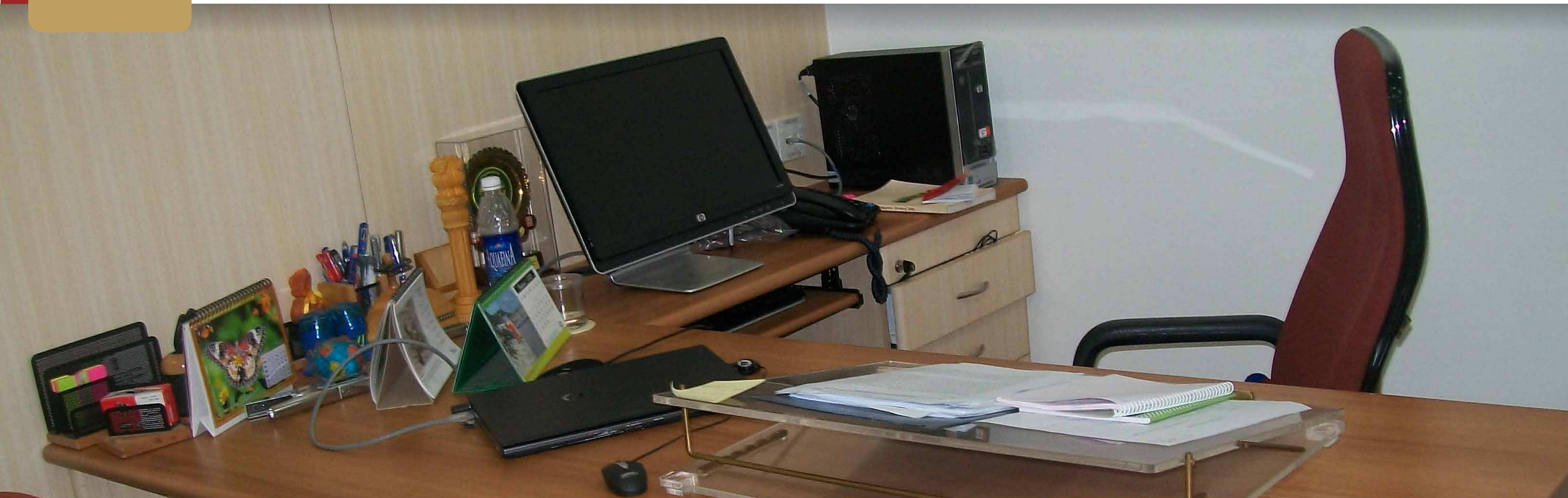






# Education Services & Institution Sector

A few of our completed assignments



COMMON WEALTH WAR  
MEMORIAL











# Telecom Sector

A few of our completed assignments











# Residential Sector

A few of our completed assignments





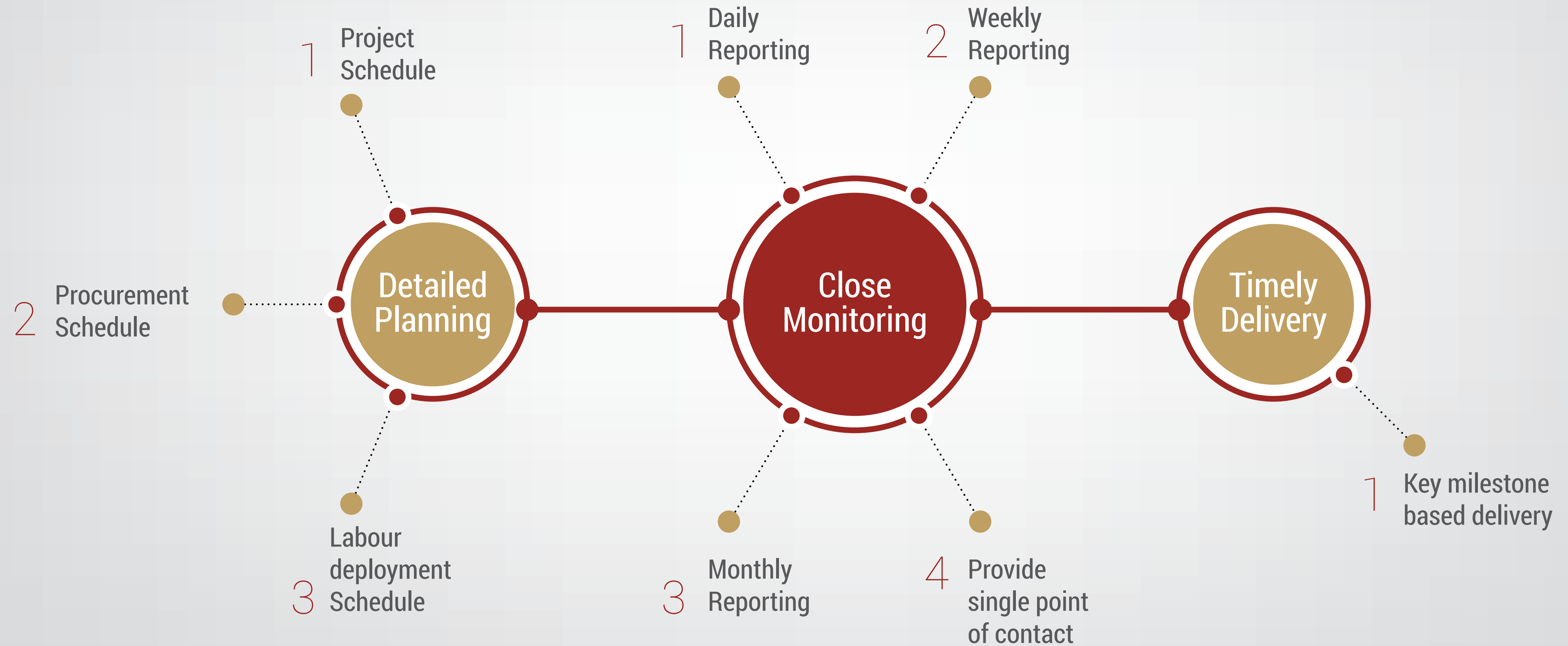




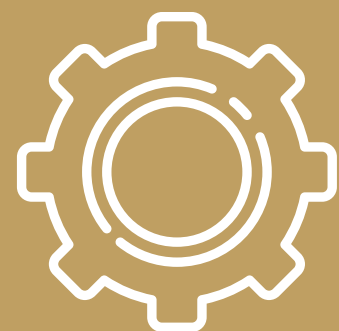


# Execution Plan

Our execution plan follows the following process







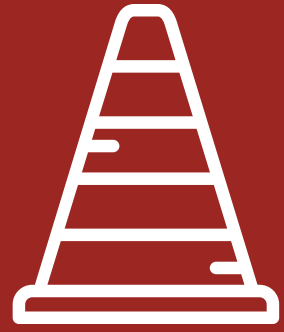
# Execution Plan

## Key Milestones

- 1 Design, Materials and BOQ finalisation
- 2 Construction phase
  - 2.1 Interior works
  - 2.2 Civil works
- 3 Electrical works
- 4 HVAC - Air-condition works
- 5 Safety & Security - Fire alarm, Access control, CCTV, PA system & BMS
- 6 Modular Furniture
- 7 Chairs, Sofa & Loose furnitures
- 8 Testing & Commissioning
- 9 Handing over (Technical & Financial closure)







# Compliance

## Safety, Statutory and Insurance

- Staff ID Cards and Safety cards for respective projects
- Safety helmet, shoes and eye protection with side shields.
- Proper tools will be used and checked for defects regularly
- Proper working platform provided for working at heights.
- Daily housekeeping. Debris, sand, concrete materials will be removed and stored at identified places
- Provision of fire extinguishers.
- First aid facility and nearby hospital tie up facility for workmen.
- Safety training programs for workmen on first aid, fire fighting and safety.
- Submission of all applicable insurance policies







# Quality Policy

## Key Milestones

- LR applies a rigorous quality control discipline. Projects are administered and managed in accordance with these requirements.
- Monitoring of the Quality System are undertaken by the Quality Department and designated personnel within the organization. Periodic reviews are carried out in the presence of the Project Manager, who authorizes any corrective action to prevent the same source

## Quality Plan Narrative

- The preparation of the Project Quality Plan is the responsibility of the Quality Department and is executed during mobilization. Reviewed and updated within that project duration. The initial and subsequent issues of the Project are subject to review and approval by Quality team .
  - LR continues to develop procedures in manual form for quality control, to ensure continuous improvement and customer confidence. The technical requirements of the contract is communicated to personnel in-charge of the project.
1. Selective but effective issue of the specification and drawings.
  2. Selective but effective issue of the project quality plan.
  3. Frequent staff meetings and briefings especially for technically demanding operations.





## Why Us

### Key Milestones



- We meet and honour all the requirements
- Propose efficient floor layouts & no negative or loss of floor space
- Eco friendly products
- Space designed to accommodate acoustic requirements which is missed in most of the interiors.
- Test reports, Guarantee/warranty certificates from the dealers & manufacturers
- Completion of the project with required cost
- One point responsibility and directly monitored on day to day basis by MD.
- Assured delivery as agreed
- After project completion till DLP period service will be taken care by dedicated team.

---

### Our Core Strength

- Repeat clientele
- Integrity and no compromise on the quality of service and products
- Credibility amongst the dealers and manufacturers
- Financial support from bankers



[www.lrinfra.com](http://www.lrinfra.com)